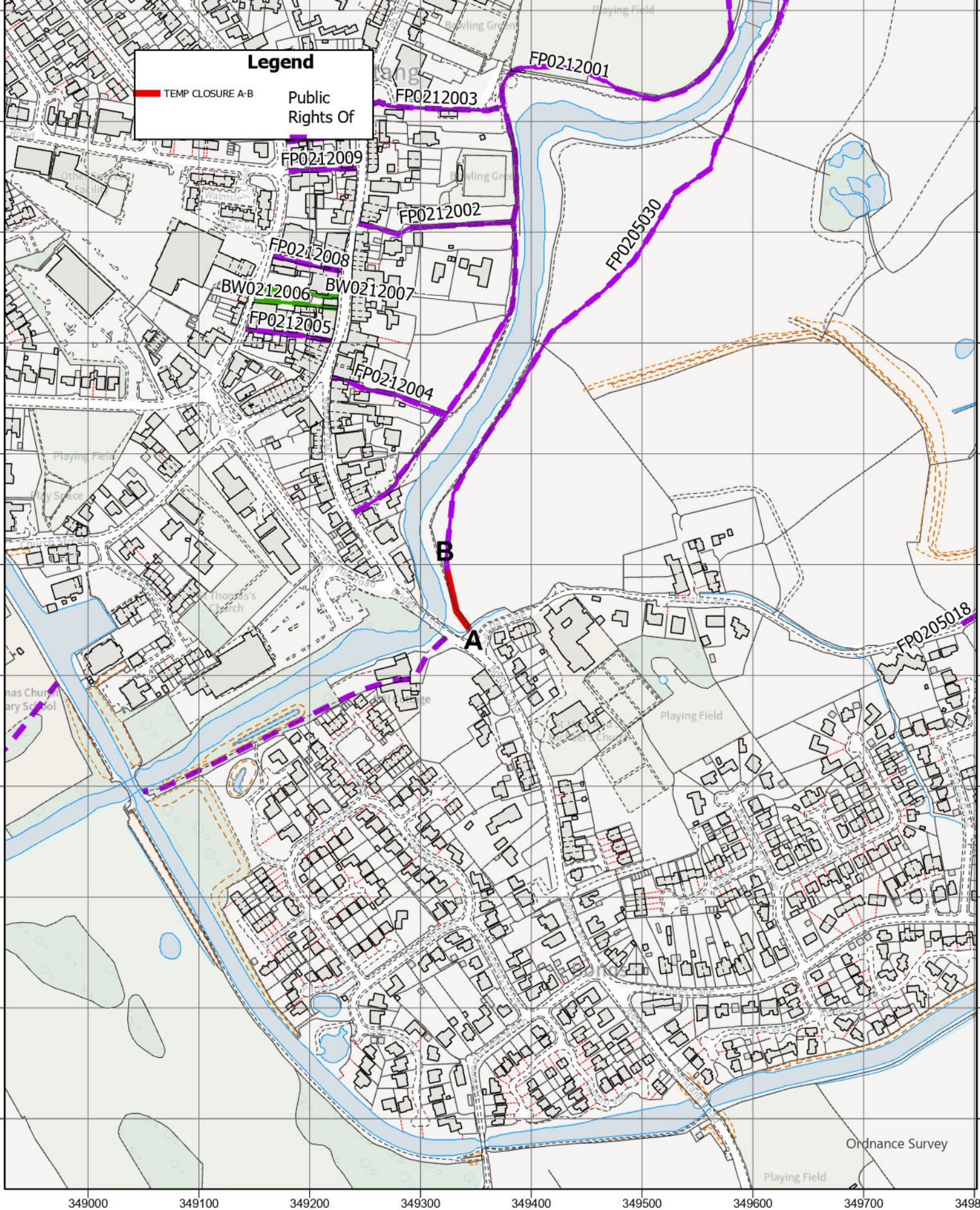


# Legend

TEMP CLOSURE A-B

Public  
Rights Of



Public Rights of Way  
PROW@lancashire.gov.uk  
01772 530317

TEMP CLOSURE OF PART OF FP0205030 - WYRE

The digitised Rights of Way information should be used for guidance only as its accuracy cannot be guaranteed. Rights of Way information must be verified on the current Definitive Map before being supplied or used for any purpose.

This Map is reproduced from Ordnance Survey material with the permission of Ordnance Survey on behalf of the controller of Her Majesty's Stationery Office (C) Crown Copyright.  
Unauthorised reproduction infringes Crown Copyright and may lead to Prosecution or civil proceedings. Lancashire County Council Licence No. 100023320